

ETHICS AND STANDARDS

ENVIRONMENTAL

Henbury are fully committed to the wellbeing and development of our planet which has encouraged big changes to our personal outlook and the way we trade. We aim to help our customers and make it easier to reduce the volume of waste going to landfill. Going forward, our products will be packaged in recycled plastic bags, which are recyclable at the end of life. Packaging components are being reduced by a huge 77% across shirts and we are reducing the number of products that are individually packaged. Finally, our bags will be made for reuse; they are resealable for ease of re-packaging and branding is being removed to allow ease of re-branding.

On top of this, our employees are making a conscious choice to go paperless and recycle all excess fabrics/garments.

It is our corporate responsibility to make an impact in reducing our carbon footprint. All of our marketing materials printed for 2020 were carbon balanced, helping to reduce CO2 emissions and preserving ecologically endangered land with World Land Trust. By using FSC certified papers and printers, promoting responsible management of the world's forests, we are doing our part to make a change.

To reduce our footprint even further, we have taken the decision to only publish our brochure online for 2021, and it doesn't stop there! We aren't letting our 2020 material go to waste either; if you prefer a hard copy to hand, our 2020 brochures are still available to order with an updated insert to remind you of our discontinued lines and new products for 2021.

You can request hard copies of our 2020 brochure at: cloud.henbury.com

MANUFACTURERS

We work with the very highest level of manufacturers developing strong, long-term partnerships to promote understanding of International Ethical Trading practices. Working with all our global suppliers to promote respect for workers' rights, ensuring workers are free from exploitation and discrimination, and enjoy conditions of freedom, security and equality. We fully recognise the importance of the people and the countries where we manufacture, and we require any associated manufacturer or supplier to share our commitment to fair and safe working practices. Our manufacturing locations are personally selected, inspected via an independent, fully recognised and accredited ethical auditing body and supported with continuous monitoring by our local representatives.

This ensures working conditions and practices are to the highest standard and within local government laws.

In addition to ensuring our high ethical standards are achieved, we support and sponsor a number of local charities within the communities with which we work and manufacture.

CERTIFICATIONS

A further indication of our commitment to social responsibility is in the number of certifications that we hold. Specific information by style and clarification relating to various certifications and standards is available from us on request.



STAY CONNECTED

For any questions about SF, contact us at: enquiries@sf-clothing.com or visit sf-clothing.com

HENBURYBRANDS

For more great quality and style, check out the full range of brands at henburybrands.com



If you'd like to arrange a virtual meeting or a visit with our brand rep, please contact enquiries@sf-clothing.com

SIZE GUIDE AND

UNISEX SIZES – TOPS

UK MEN'S SIZE - TO FIT	XL
EUR MEN'S - CHEST - TO FIT	42
UK WOMEN'S - TO FIT	1
EUR WOMEN'S - TO FIT	3
CHEST - TO FIT - INCHES	32-
CHEST - TO FIT - CMS	81-8

UNISEX SIZES – BOTTOMS

UK MEN'S SIZE - TO FIT	XL
EUR MEN'S - WAIST - TO FIT	3
UK WOMEN'S - TO FIT	1
EUR WOMEN'S - TO FIT	3
WAIST -TO FIT - INCHES	28
WAIST - TO FIT - CMS	71
INSIDE LEG LENGTH - TO FIT REGULAR - INCHES	3
INSIDE LEG LENGTH - TO FIT REGULAR - CM	81

MEN'S SIZES (EXCL. JEANS)

EUR - CHEST - TO FIT	
EUR - WAIST - TO FIT	
CHEST - TO FIT - INCHES	
CHEST - TO FIT - CMS	
WAIST - TO FIT - INCHES	
WAIST - TO FIT - CMS	
INSIDE LEG LENGTH - TO FIT REGULAR - INCHES	
INSIDE LEG LENGTH - TO FIT REGULAR - CMS	

MEN'S SIZES (SF600 JEANS)

EUR - WAIST - TO FIT	3
WAIST - TO FIT - CMS	71
INSIDE LEG LENGTH - TO FIT REGULAR - INCHES	3
INSIDE LEG LENGTH - TO FIT REGULAR - CM	81
INSIDE LEG LENGTH - TO FIT LONG - INCHES	3
INSIDE LEG LENGTH - TO FIT LONG - CM	86

WOMEN'S SIZES (EXCL. JEANS)

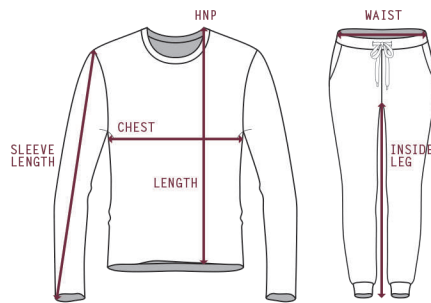
UK - TO FIT	
EUR - TO FIT	
CHEST - TO FIT - INCHES	28-
CHEST - TO FIT - CMS	71-
WAIST - TO FIT - INCHES	2
WAIST - TO FIT - CM	61
INSIDE LEG LENGTH - TO FIT REGULAR - INCHES	3
INSIDE LEG LENGTH - TO FIT REGULAR - CM	81

WOMEN'S SIZES (SF600 JEANS)

UK - TO FIT	
EUR - TO FIT	
WAIST - TO FIT - CM	
INSIDE LEG LENGTH - TO FIT REGULAR - INCHES	
INSIDE LEG LENGTH - TO FIT REGULAR - CM	
INSIDE LEG LENGTH - TO FIT LONG - INCHES	

GARMENT SPECIFICATIONS

ALL MEASUREMENTS ARE IN CM. CHEST IS MEASURED 2.5CM BELOW ARMHOLE.



SF MEN + UNISEX

SF028 MEN'S MICROFLEECE JACKET		S	M	L	XL	XXL		TOLS +/-	
CHEST		45.0	48.0	51.0	54.0	57.0		1.5	
LENGTH		70.0	72.0	74.0	76.0	78.0		2.0	
SLEEVE LENGTH		61.0	62.0	63.0	64.0	65.0		2.0	
SF042 MEN'S SHORT SLEEVED STRETCH POLO		S	M	L	XL	XXL		TOLS +/-	
CHEST		44.0	48.0	52.0	56.0	60.0		1.5	
LENGTH		65.5	69.5	73.5	76.5	79.5		2.0	
SLEEVE LENGTH		20.0	21.0	22.0	23.0	24.0		1.5	
SF044 MEN'S LONG SLEEVED STRETCH POLO		S	M	L	XL	XXL		TOLS +/-	
CHEST		46.0	49.0	52.0	55.0	59.0		1.5	
LENGTH		65.5	69.5	73.5	76.5	79.5		2.0	
SLEEVE LENGTH		60.0	62.0	63.0	64.0	65.0		1.5	
SF069 MEN'S RETRO SHORTS		S	M	L	XL			TOLS +/-	
WAIST		36.0	38.0	40.0	42.0			1.5	
INSIDE LEG		13.5	14.0	14.5	15.0			1.0	
SF082 MEN'S TARTAN LOUNGE SHORTS		XS	S	M	L	XL	XXL	TOLS +/-	
WAIST		34.0	37.0	40.0	43.0	46.0	49.0	1.5	
INSIDE LEG		14.0	14.0	14.0	14.0	14.0	14.0	1.0	
SF083 MEN'S TARTAN LOUNGE PANTS		XS	S	M	L	XL	XXL	TOLS +/-	
WAIST		34.0	37.0	40.0	43.0	46.0	49.0	1.5	
INSIDE LEG		78.0	78.0	78.0	79.0	79.0	79.0	2.0	
SF085 MEN'S LOUNGE PANTS		XS	S	M	L	XL	XXL	TOLS +/-	
WAIST		32.0	35.0	38.0	41.0	44.0	47.0	1.5	
INSIDE LEG		78.0	78.0	78.0	79.0	79.0	79.0	2.0	
SF121 MEN'S FEEL GOOD STRETCH T		XS	S	M	L	XL	XXL	TOLS +/-	
CHEST		42.0	45.0	48.0	51.0	54.0	57.0	1.5	
LENGTH		68.0	70.0	72.0	74.0	76.0	78.0	2.0	
SLEEVE LENGTH		17.0	17.5	18.5	19.5	20.5	21.5	1.0	
SF122 MEN'S FEEL GOOD STRETCH V		S	M	L	XL	XXL		TOLS +/-	
CHEST		45.0	48.0	51.0	54.0	57.0		1.5	
LENGTH		70.0	72.0	74.0	76.0	78.0		2.0	
SLEEVE LENGTH		17.5	18.5	19.5	20.5	21.5		1.5	
SF123 MEN'S FEEL GOOD STRETCH VEST		S	M	L	XL	XXL		TOLS +/-	
CHEST		45.0	48.0	51.0	54.0	57.0		1.5	
LENGTH		70.0	72.0	74.0	76.0	78.0		2.0	
SF124 MEN'S FEEL GOOD STRETCH LONG SLEEVED T		S	M	L	XL	XXL		TOLS +/-	
CHEST		46.0	49.0	52.0	55.0	58.0		1.5	
LENGTH		70.0	72.0	74.0	76.0	78.0		2.0	
SLEEVE LENGTH		66.0	67.0	68.0	69.0	70.0		2.0	
SF125 MEN'S FEEL GOOD STRETCH ROLL NECK		S	M	L	XL	XXL		TOLS +/-	
CHEST		45.0	48.0	51.0	54.0	57.0		1.5	
LENGTH		71.0	73.0	75.0	77.0	79.0		2.0	
SLEEVE LENGTH		67.0	68.0	69.0	70.0	71.0		2.0	
SF202 UNISEX STRIPED T		XXS	XS	S	M	L	XL	XXL	TOLS +/-
CHEST		45.0	48.0	51.0	54.0	57.0	60.0	63.0	1.5
LENGTH		68.0	70.0	72.0	74.0	76.0	78.0	80.0	2.0

NEW	SF253 UNISEX CONTRAST T	CHEST	LENGTH	SLEEVE LENGTH		
NEW	SF254 UNISEX SCOOP NECK T	CHEST	LENGTH	SLEEVE LENGTH		
	SF258 MEN'S LONGLINE T WITH DIPPED HEM	CHEST	LENGTH (FRONT)	LENGTH (BACK)	SLEEVE LENGTH	
NEW	SF259 MEN'S LONG SLEEVED LONGLINE T WITH DIPPED	CHEST	LENGTH (FRONT)	LENGTH (BACK)	SLEEVE LENGTH	
	SF271 MEN'S LONG SLEEVED BASEBALL T	CHEST	LENGTH (FRONT)	SLEEVE LENGTH (FROM HNP)		
	SF423 UNISEX CONTRAST JOGGERS	WAIST	INSIDE LEG			
	SF425 MEN'S SLIM FIT CUFFED JOGGERS	WAIST	INSIDE LEG			
	SF440 MEN'S FASHION POLO	CHEST	LENGTH	SLEEVE LENGTH		
	SF470 UNISEX ALL-IN-ONE	CHEST	LENGTH	SLEEVE LENGTH	WAIST	INSIDE LEG
	SF511 UNISEX BOMBER ZIP-THROUGH SWEAT	CHEST	LENGTH	SLEEVE LENGTH		
	SF514 UNISEX DROP SHOULDER SLOGAN TOP	CHEST (4.5CM BELOW ARMHOLE)	LENGTH (FRONT)	LENGTH (BACK)	SLEEVE LENGTH	SHOULDER TO SHOULDER
	SF520 UNISEX WASHED TOUR SWEAT	CHEST	LENGTH	SLEEVE LENGTH		
	SF523 UNISEX CONTRAST SWEAT	CHEST	LENGTH	SLEEVE LENGTH (FROM HNP)		
	SF525 UNISEX SLIM FIT SWEAT	CHEST	LENGTH	SLEEVE LENGTH		

S F WOMEN

SK028 WOMEN'S MICROFLEECE JACKET	XS	S	M	L	XL	XXL	TOLS +/-
CHEST	40.0	43.0	46.0	49.0	52.0	55.0	1.5
LENGTH	60.0	62.0	64.0	66.0	68.0	70.0	2.0
SLEEVE LENGTH (FROM HNP)	71.0	72.0	73.0	74.0	75.0	76.0	2.0

SK042 WOMEN'S SHORT SLEEVED STRETCH POLO		S	M	L	XL		TOLS +/-
CHEST		40.0	43.0	46.0	49.0		1.5
LENGTH		60.0	62.0	64.0	66.0		1.5
SLEEVE LENGTH		15.0	15.5	16.0	16.5		1.0

SK044 WOMEN'S LONG SLEEVED STRETCH POLO		S	M	L	XL		TOLS +/-
CHEST		40.0	43.0	46.0	49.0		1.5
LENGTH		60.0	62.0	64.0	66.0		1.5
SLEEVE LENGTH		58.0	60.0	62.0	64.0		1.5

SK062 WOMEN'S SHORTS		S	M	L			TOLS +/-
WAIST		35.0	38.0	41.0			1.5
INSIDE LEG		6.0	6.0	6.0			1.0

SK064 WOMEN'S LEGGINGS	XS	S	M	L	XL		TOLS +/-
WAIST	26.0	29.0	32.0	35.0	38.0		1.5
INSIDE LEG	70.0	70.0	70.0	70.0	70.0		2.0

SK068 WOMEN'S 3/4 LENGTH LEGGINGS	XS	S	M	L	XL	XXL	TOLS +/-
WAIST	27.5	30.5	33.5	36.5	39.5	42.5	1.5
INSIDE LEG	50.0	52.0	54.0	56.0	58.0	60.0	1.5

SK069 WOMEN'S RETRO SHORTS	XS	S	M	L	XL	XXL	TOLS +/-
WAIST	33.0	36.0	39.0	42.0	45.0	48.0	1.5
INSIDE LEG	5.0	5.0	5.0	5.0	5.0	5.0	1.0

SK082 WOMEN'S TARTAN FRILL LOUNGE SHORTS	XXS	XS	S	M	L	XL	TOLS +/-
WAIST	32.0	35.0	38.0	41.0	44.0	47.0	1.5
INSIDE LEG	6.0	6.0	6.0	6.0	6.0	6.0	1.0

SK083 WOMEN'S TARTAN LOUNGE PANTS	XXS	XS	S	M	L	XL	TOLS +/-
WAIST	32.0	35.0	38.0	41.0	44.0	47.0	1.5
INSIDE LEG	77.0	77.0	77.0	78.0	78.0	78.0	2.0

NEW SK085 WOMEN'S CUFFED LOUNGE PANTS	XS	S	M	L	XL	XXL	TOLS +/-
WAIST	35.0	38.0	41.0	44.0	47.0	49.0	1.5
INSIDE LEG	70.0	70.0	70.0	71.0	71.0	71.0	2.0

SK104 WOMEN'S STRETCH VEST DRESS		S	M	L	XL		TOLS +/-
CHEST		38.0	41.0	44.0	47.0		1.5
LENGTH		82.0	84.0	86.0	88.0		2.0

NEW SK106 WOMEN'S CROPPED TOP	XS	S	M	L	XL		TOLS +/-
CHEST	33.0	35.0	37.0	39.0	41.0		1.5
LENGTH	35.5	37.0	38.5	40.0	41.5		1.5

SK121 WOMEN'S FEEL GOOD STRETCH T	XS	S	M	L	XL	XXL	TOLS +/-
CHEST	39.5	41.5	44.5	47.5	51.5	55.5	1.5
LENGTH	62.0	63.0	63.0	64.0	65.0	65.0	1.5
SLEEVE LENGTH	15.0	15.0	15.5	16.0	16.0	16.0	1.0

SK122 WOMEN'S FEEL GOOD STRETCH V	XS	S	M	L	XL	XXL	TOLS +/-
CHEST	39.5	41.5	44.5	47.5	51.5	55.5	1.5
LENGTH	62.0	63.0	63.0	64.0	65.0	65.0	1.5
SLEEVE LENGTH	15.0	15.0	15.5	16.0	16.0	16.0	1.0

SK123 WOMEN'S FEEL GOOD STRETCH VEST	XS	S	M	L	XL	XXL	TOLS +/-
CHEST	37.0	40.0	43.0	46.0	49.0	52.0	1.5
LENGTH	61.0	62.0	63.0	64.0	65.0	66.0	1.5

SK124 WOMEN'S FEEL GOOD STRETCH LONG SLEEVED T	XS	S	M	L	XL	XXL	TOLS +/-
CHEST	40.0	43.0	46.0	49.0	52.5	56.5	1.5
LENGTH	61.0	62.0	63.0	64.0	65.0	66.0	1.5
SLEEVE LENGTH	58.0	58.0	59.0	59.0	60.0	60.0	1.5

SK125 WOMEN'S FEEL GOOD STRETCH ROLL NECK	XS	S	M	L	XL	XXL	TOLS +/-
---	----	---	---	---	----	-----	----------

SK213 WOMEN'S SLOUNGE T
CHEST
LENGTH
SLEEVE LENGTH (FROM HNP)

SK232 WOMEN'S HIGH NECK SLASH ARMHOLE VEST
CHEST
LENGTH

SK233 WOMEN'S DROP TAIL T
CHEST
LENGTH (FRONT)
LENGTH (BACK)
SLEEVE LENGTH

SK234 WOMEN'S SLOUNGE VEST
CHEST
LENGTH

SK235 WOMEN'S WORKOUT CROPPED TOP
CHEST
LENGTH

SK236 WOMEN'S FASHION CROP TOP
CHEST
LENGTH

SK237 WOMEN'S CROPPED BOXY T
CHEST
LENGTH
SLEEVE LENGTH

SK241 WOMEN'S FASHION WORKOUT VEST
CHEST
LENGTH

SK257 WOMEN'S T SHIRT DRESS
CHEST
LENGTH
SLEEVE LENGTH

SK263 WOMEN'S SLOUNGE TOP
CHEST
LENGTH (FRONT)
LENGTH (BACK)
SLEEVE LENGTH

SK271 WOMEN'S LONG SLEEVED BASEBALL T
CHEST
LENGTH (FRONT)
SLEEVE LENGTH (FROM HNP)

SK424 WOMEN'S REVERSIBLE WORKOUT LEGGINGS
WAIST
INSIDE LEG

SK425 WOMEN'S SLIM FIT CUFFED JOGGERS
WAIST
INSIDE LEG

NEW SK426 WOMEN'S FASHION LEGGINGS
WAIST
INSIDE LEG

NEW SK427 WOMEN'S FASHION CYCLING SHORTS
WAIST
INSIDE LEG

SK436 WOMEN'S FASHION BRIEFS
WAIST
LENGTH (FRONT)

SK513 WOMEN'S SLOUNGE SWEAT
CHEST
LENGTH
SLEEVE LENGTH

S F MINNI

SM016 KIDS' TANK VEST	AGE (YEARS)	4-6	7-9	10-12	TOLS +/-
CHEST		29.0	31.0	33.0	1.5
LENGTH		43.0	46.0	49.0	1.5

SM062 KIDS' SHORTS	AGE (YEARS)	5-6	7-8	9-10	11-12	TOLS +/-
WAIST		27.0	30.0	33.0	36.0	1.5
INSIDE LEG		5.0	5.0	5.0	5.0	1.0

SM064 KIDS' LEGGINGS	AGE (YEARS)	3-4	5-6	7-8	9-10	11-12	TOLS +/-
WAIST		23.0	25.0	27.0	30.0	33.0	1.5
INSIDE LEG		40.0	45.5	51.0	56.5	62.0	1.5

SM069 KIDS' RETRO SHORTS	AGE (YEARS)	5-6	7-8	9-10	11-12	TOLS +/-
WAIST		25.0	28.0	31.0	34.0	1.5
INSIDE LEG		3.0	3.0	3.5	3.5	1.0

SM083 KIDS' TARTAN LOUNGE PANTS	AGE (YEARS)	5-6	7-8	9-10	11-12	13	TOLS +/-
WAIST		25.0	28.0	31.0	34.0	37.0	1.5
INSIDE LEG		49.0	55.0	61.0	67.0	73.0	1.5

SM085 KIDS' CUFFED LOUNGE PANTS	AGE (YEARS)	5-6	7-8	9-10	11-12	13	TOLS +/-
WAIST		25.0	28.0	31.0	34.0	37.0	1.5
INSIDE LEG		47.0	53.0	59.0	65.0	71.0	1.5

SM121 KIDS' FEEL GOOD STRETCH T	AGE (YEARS)	3-4	5-6	7-8	9-10	11-12	TOLS +/-
CHEST		30.0	33.0	36.0	39.0	42.0	1.5
LENGTH		40.0	44.0	48.0	52.0	56.0	1.5
SLEEVE LENGTH		12.5	13.5	14.5	15.5	16.5	1.0

SM123 KIDS' FEEL GOOD STRETCH VEST	AGE (YEARS)	5-6	7-8	9-10	11-12	TOLS +/-
CHEST		32.0	35.0	38.0	41.0	1.5
LENGTH		44.0	48.0	52.0	56.0	1.5

SM126 KIDS FEEL GOOD STRETCH SPAGHETTI VEST	AGE (YEARS)	5-6	7-8	9-10	11-12	TOLS +/-
CHEST		29.0	32.0	35.0	38.0	1.5
LENGTH		34.0	38.0	42.0	46.0	1.5

SM170 KIDS' HIGH NECK CROP VEST	AGE (YEARS)	5-6	7-8	9-10	11-12	TOLS +/-
CHEST		26.0	29.0	32.0	35.0	1.5
LENGTH		38.5	39.5	40.5	41.5	1.5

SM202 KIDS' STRIPED T	AGE (YEARS)	5-6	7-8	9-10	11-12	TOLS +/-
CHEST		34.0	37.0	40.0	43.0	1.5
LENGTH		44.0	48.0	52.0	56.0	1.5
SLEEVE LENGTH		13.5	14.5	15.5	16.5	1.0

SM236 KIDS' FASHION CROP TOP	AGE (YEARS)	5-6	7-8	9-10	11-12	TOLS +/-
CHEST		26.0	29.0	32.0	35.0	1.5
LENGTH		25.5	27.0	28.5	30.0	1.5

SM241 KIDS' FASHION WORKOUT VEST	AGE (YEARS)	5-6	7-8	9-10	11-12	TOLS +/-
CHEST		29.0	32.0	35.0	38.0	1.5
LENGTH		47.0	49.5	52.0	54.5	1.5

SM271 KIDS' LONG SLEEVED BASEBALL T	AGE (YEARS)	5-6	7-8	9-10	11-12	TOLS +/-
CHEST		33.0	36.0	39.0	42.0	1.5
LENGTH		46.0	49.0	52.0	55.0	1.5
SLEEVE LENGTH (FROM HNP)		48.0	51.5	55.0	57.5	1.5

SM425 KIDS' SLIM FIT CUFFED JOGGERS	AGE (YEARS)	5-6	7-8	9-10	11-12	TOLS +/-
WAIST		25.0	28.0	31.0	34.0	1.5
INSIDE LEG		47.0	53.0	59.0	65.0	1.5

SM426 KIDS' FASHION LEGGINGS	AGE (YEARS)	5-6	7-8	9-10	11-12	TOLS +/-
WAIST		25.0	27.0	30.0	33.0	1.5
INSIDE LEG		45.5	51.0	56.5	62.0	1.5

SM427 KIDS' FASHION CYCLING SHORTS	AGE (YEARS)	5-6	7-8	9-10	11-12	TOLS +/-
WAIST		25.0	27.0	30.0	33.0	1.5
INSIDE LEG		13.0	13.0	13.0	13.0	1.0

SM526 KIDS' ZIP-THROUGH HOODY
CHEST
LENGTH
SLEEVE LENGTH

AGE (

